

# COMPANY PROFILE

## Innovative and Collaborative

Our values have become the compass that guides our actions while conducting our daily activities. We also deploy the most effective time-tested, result-oriented, and globally accepted practice approach in all our construction and consultancy engagements.



Reimagining Infrastructure  
RC 138 2879



EMAIL

[contactus@vertmance.com](mailto:contactus@vertmance.com)



TELEPHONE

+234-812-6833-336



WEBSITE

[vertmance.com](http://vertmance.com)



# VERTMANCE ENGINEERING & CONSTRUCTION LIMITED

## Our Services

- Building Productions
- Civil Works
- Renewable Energy
- Engineering Consultancy

Work With Us →

+234 812 6833 336



# Contact Us

The Epicenter, 3rd floor, Vertmance office, No 1 (Plot 480)  
Zilly Aggrey Drive, Karmo - Abuja, FCT. Abuja



[www.vertmance.com](http://www.vertmance.com) / +234 812 6833 336



# About Us



VERTMANCE E & C LIMITED is an infrastructural project development and management company that operates based on the technical and financial capacity of its partners to deliver bankable and investible projects to clients on the local and global fronts.

Established in 2017 to participate in the development of the economy, Vertmance Engineering and Construction Limited has directed several millions of investments in the field of real estate, building production, engineering consultancy, renewable energy and water infrastructures.



## Who we are



Vertmance Engineering and Construction Limited is a well-experienced Engineering and Construction company with seasoned Project Engineers and a multi-disciplinary Engineering team capable of delivering high-level management.

Vertmance Engineering and Construction Limited boasts of over 40 years of combined working experience amongst its directors and lead Engineers, HSE Engineers, etc.

The increasing need for oil and gas for both public and private sector customers in Africa has provided an opening for a best-in-class service class provider focused on the needs of the customers.

Our execution is best in class through local teams and organizations, operating world-class standards with our global partners and capital.

# Mission & Vision



## Mission

- ☑ Our *Vision* is to emerge as the preferred integrated construction partner to the public sector in West Central Africa.



## Vision

- ☑ Our *Mission* is to provide our clients with the highest quality of efficiently delivered services to satisfy their project objectives while exceeding their expectations





## SAFETY STATEMENT

Our determination to deliver projects safely goes beyond the rhetoric, but forms an intricate part of our operating philosophy. We are convinced that no work is worth doing if it will put our people, which are our greatest assets, in harm's way. To this end we are absolutely committed to: \_\_\_\_\_

...ensuring everyone goes back home SAFE.

...the principle that safety is inbuilt in our work and thinking.

...the believe that safety follows us home. It is culture.

# quality management

## OUR POLICY

Any item that does not completely fulfill the requirement of the engineering design will be considered as nonconformance and that can be the time of recovery or will review all Field Trouble Report (FTR) originated in the file and classify the FTR for appropriation and distribution. It will maintain index of all FTR and nonconformance as part of the CR/FTR log.



The company places a high premium on cordial relations with the Operators as well as their neighbors, especially the Host Communities, who are considered as participants in the successful execution of a particular project. It is therefore the goal of the company, through a coordinated approach between the Operator's Community Affairs Department and the Company's Public Affairs Department, to establish and maintain mutually beneficial relationship with the Host Communities prior to and execution of the contracts in their areas.

In applicable cases, minor contracts are awarded to indigenous sub-contractor from the Host Community while Community workers are recruited either directly in collaboration with local associations, or through a labor sub-contractor. Conditions of services are generally based on the norm from that area and or existing agreements between the Communities and particular project development.



# OUR FOCUS



## Infrastructure

At VEC we are experienced in **Turnkey Contracting** and **Infastuctural Project Development**.



## Oil & Gas

We actively deploy **facilities & pipelines, refining terminals & storage** and **downstream maritime services**.



## Power/Electrification

We play in the power sector through the development of **power plants, sub - stations, Automation Development, renewables, Rural Electification projects** and other power projects.



## Water Resources

We also carry-out water resources management projects through **pipelines installation & manegent, water project development and concession management**.





## OUR COMMITMENT



The increasing need for infrastructure by both public and private sector demands in Africa has provided an opening for a best-class service provider focusing on the needs of the customer.

We at Vertmance E & C, boosted by the support of our global parent – Chieftain Canadian Holdings – see this opportunity in the landscape and now pursue a developing and true integrated service provider in the infrastructure sector focused especially on enabling Public-Private Partnerships. Our execution is best in class through local teams and organizations, operating world-class standards with our global partners and capital. We are one company determined to transform the landscape.

# OUR GROWTH STRATEGY

Vertmance E&C key strategy is to win some sizeable projects in the public and defense sector along construction and engineering requirements, while building long term strategic partnerships with international companies. And our goal is building durable long-term global partnerships, and grow from pure service-oriented company to asset owner bringing state of the art construction to Nigeria. Our areas of expansion include Kaduna Millenium Garden, Millenium City, Kaduna State,

Our values have become the compass that guide our actions while conducting our day activities. We also deplore the most effective time tested, result oriented and globally accepted practice approach in all our construction and consultancy engagements.



# OUR PAST PROJECTS: Road



Served as the Project Management Consultant (PMC) for the SUKUK-funded road projects in the northern part of Nigeria.

YEAR; 2017 - 2022.

CLIENT: Federal Ministry Of Works

TRUSTEES: FBNQUEST, STL, DMO

# OUR PAST PROJECTS: Road



Served as the Project Management Consultant (PMC) for the SUKUK-funded road projects in the northern part of Nigeria.

YEAR; 2017 - 2022.

CLIENT: Federal Ministry Of Works

TRUSTEES: FBNQUEST, STL, DMO

# OUR PAST PROJECTS: Building



Participation in the Niger Delta Support Programme (NDSP IV) in the Construction of Market Structures, Town Halls, and Toilet Units,

YEAR; 2017 - 2019.

CLIENT: European Union.

# OUR PAST PROJECTS: Road



**Emergency Repairs of failed sections between Km 9+00 - Km 86+00 Along Iseyin-Maya-Igbo-Ora in Oyo State.**

**YEAR; 2020 - 2021.**

**CLIENT: Federal Roads Maintenance Agency (FERMA)**

# OUR PAST PROJECTS: Building



**Construction of National Mathematical Centre Stores Complex with Procurement Unit**

**YEAR; 2021 - 2022.**

**CLIENT: National Mathematical Centre (NMC)**



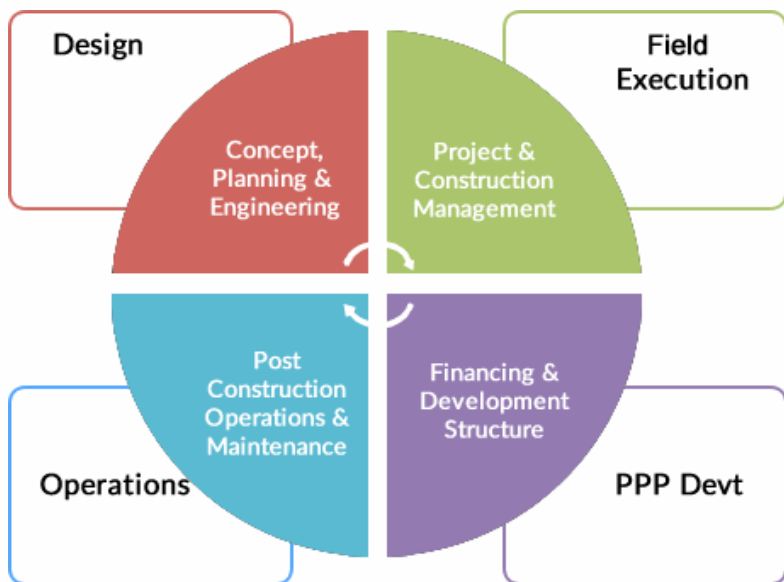
# OUR PAST PROJECTS: Electrification



**50KW Solar Mini-Grid Rural Electrification Project at Alwaza Village, Doma Local Government, Nasarawa State.**

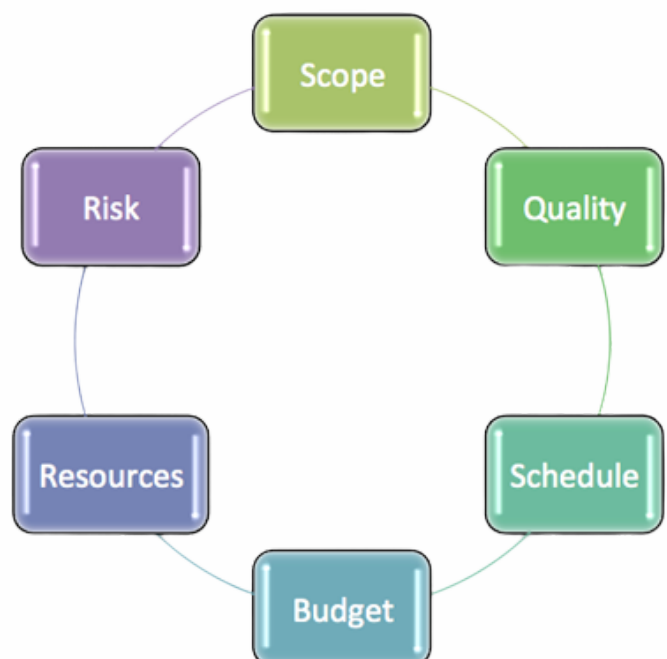
**YEAR; 2021 - 2022.**

**CLIENT: Rural Electrification Agency (REA)**



- Quality – Enforcing the use of total quality management processes in delivering our services.
- Innovation – Reinventing better ways of delivering excellence.

- Cost competitiveness – Delivering quality at the cheapest rate possible.
- Timeliness – We are always on time.



# Scope of Services

## Building & Civil Engineering

This section undertakes the design, construction and installation of civil construction works and services. We offer services to build single family homes, multi-family duplex developments as well as designing and reaction of prefab units. A strong team effort brings the customers together with architects, engineers, as well as suppliers. Together they provide workable solutions to creative building ideas; and the result is quality economy and speed – a simple yet vital combination. We design and develop corporate / individual residential outlays such as plan design and drawing interpretation, evaluation and quantification to meet our client taste and needs. Also, provide pilling and still reinforcement compactions, and raft foundation constructions.



# Scope of Services

## Renovations

We also undertake the renovation and rehabilitation of debilitation structures such as office buildings, airports, and residential buildings to modern and superior standards.

## Borehole

We specialize in the drilling of commercial boreholes including solar-powered bore-holes and water reticulation systems. We also construct storage tanks, piping and distributing, and water treatment



# Scope of Services



## Mechanical & Electrical Works

We offer a wide range of rural and urban electrification services, including the construction of electrical powerhouses, the construction of farms, transfer bases, automated indoor devices installations, and the connection of transformers to clients' property and facilities. Also, we undertake shop fabrication and construction, and distribution of steel tanks for filling stations and water storage.

## Roads & Highway Construction

We provide road construction services using only the best materials and the highest level of techniques, the solutions we provide are tailored to suit the needs of diverse market categories: Individuals, organizations and communities etc.

The extent of our services under this category includes: sub – grade preparation (excavation and stabilization), sub – surface drainage preparation and installation, composite public road projects, site development, paving, utility/infrastructure and drainage systems.



Road Construction



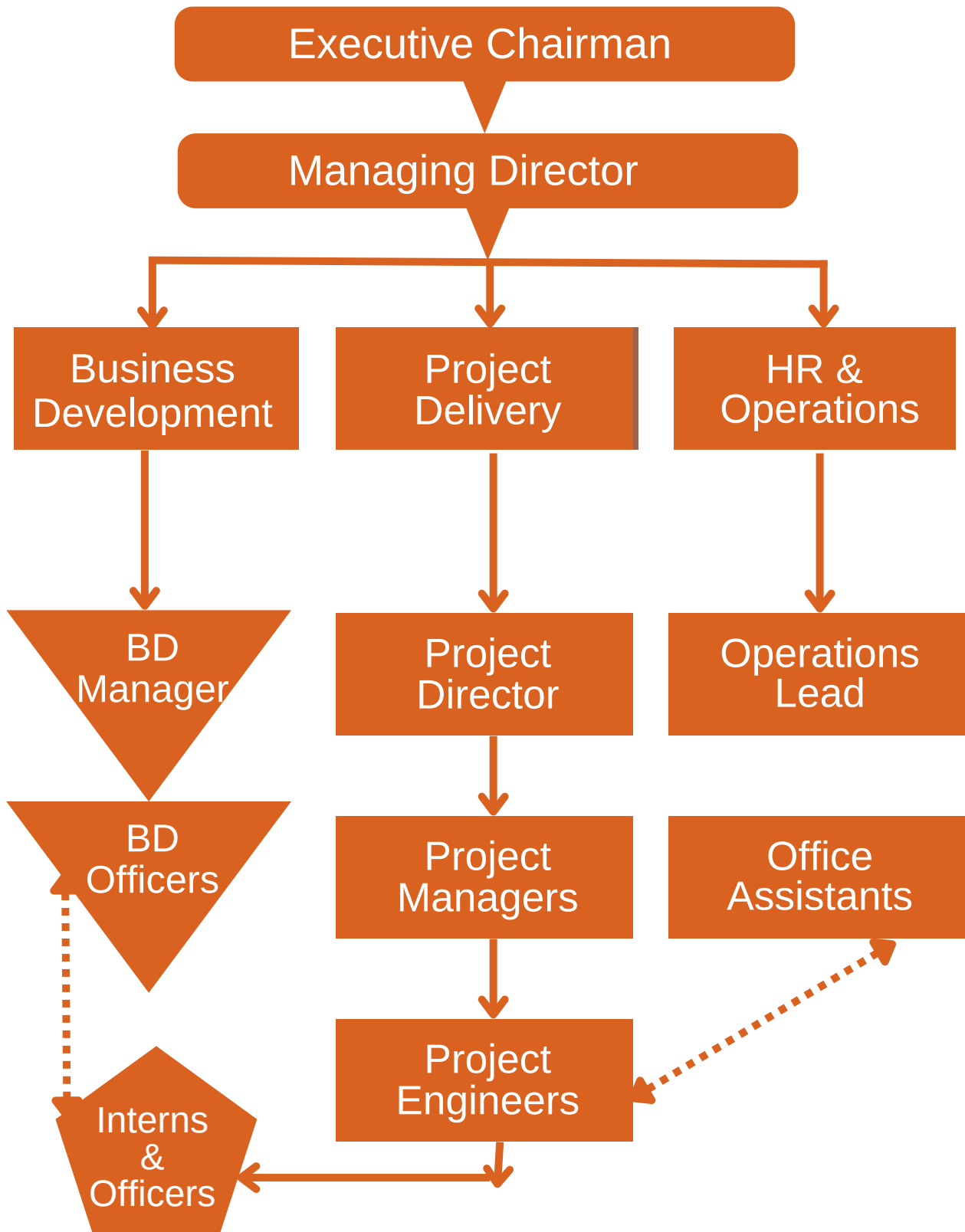
Borehole Drilling



Building Production



# ORGANIZATIONAL CHART



# AVAILABILITY OF PLANTS AND EQUIPMENT



We have a technical partnership agreement with Manal Equipment Nigeria Limited.





<i>S/n</i>	<i>Name of equipment</i>	<i>Quantity</i>	<i>Owned</i>	<i>Lease</i>	<i>Availability</i>
1	Low bed	1		Lease	Available
2	Welding machine	2	Owned		Available
3	4WD Pick up van	4	Owned		Available
4	Grinding machine	4	Owned		Available
5	Front dumper	2	Owned		Available
6	Welding generator	3	Owned		Available
7	Tippers	2	Owned		Available
8	Dozer	2		Lease	Available
9	Bending machine	4	Owned		Available
10	Forklift	1		Lease	Available
11	Drilling Rig	1		Lease	Available
12	Excavator	1		Lease	Available
13	Self-loader	1		Lease	Available
14	Concrete mixer	8	Owned		Available
15	Surveying equipment	4		Lease	Available
16	Cutting machine	3	Owned		Available
17	Tripod with chain blocks	1		Lease	Available
18	Gripping/Logging Machine (Range10-300mm2 Cable size)	1	Owned	Lease	Available
19	Mitsubishi L300	1	Owned		Available
20	Complete Electrical Tool box	2	Owned		Available
21	Complete Mechanical Tool box	2	Owned		Available
22	Megger C500	1	Owned		Available
23	Earth Tester	1	Owned		Available
24	Aluminium Ladder of various sizes	2 Each	Owned		Available
25	Standard scaffolds materials	300 sq.m	Owned		Available
26	Poker Vibrator	2	Owned		Available
27	Water tank 10,000 Ltr.	2	Owned		Available
28	3 kVA Generator	1	Owned		Available
29	High Resolution Digital Camera	2	Owned		Available

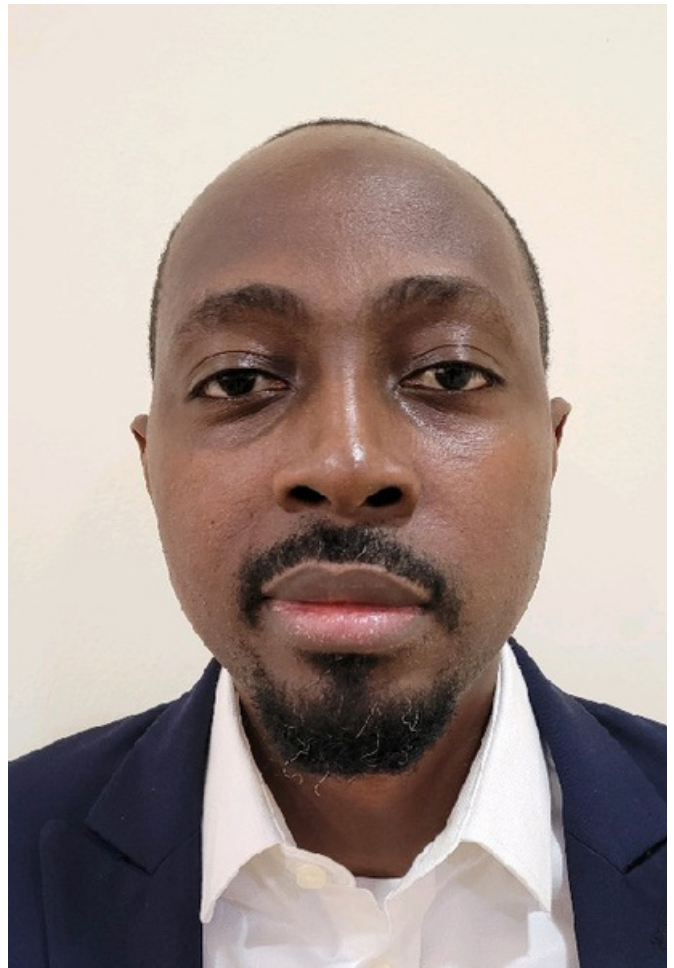
## MEET OUT TEAM

Our team is your team. When your mission is to be better, faster, and smarter, you need the best people to drive your vision forward - You'll need people who can create focused strategies that align with your business goals. Get to know your team below.

### OUR MANAGEMENT TEAM



**BANKOLE OLABISI**  
Managing Director

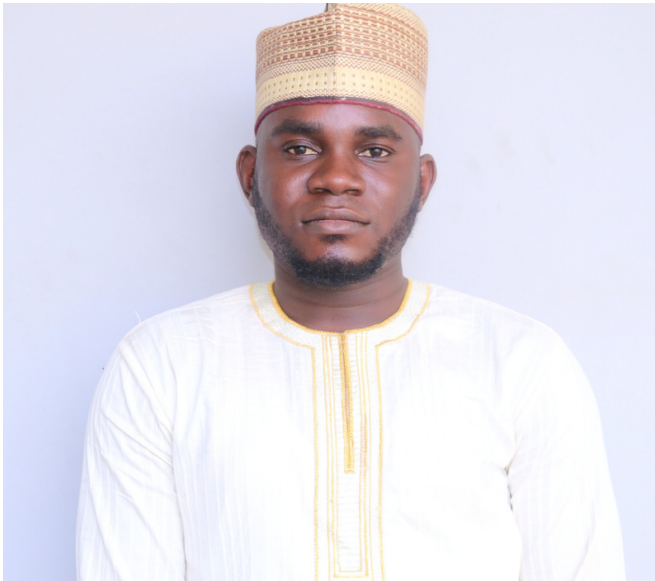


**OLAWALE SULEIMAN**  
Utility Operations Director

## MEET OUR TEAM

We firmly believe in hiring, developing, and motivating great people. Everyone at Vertmance is committed to your satisfaction and driven to exceed our clients' expectations

### OUR STRATEGY TEAM



**ADEWALE OLAGUNJU**  
Project Manager



**SAHEED OLATUNJI**  
Business Development



**TINA IBE**  
HR & Operations



**AGUKWE CHIDINMA**  
BD Officer

## MEET OUR TEAM

We firmly believe in hiring, developing, and motivating great people. Everyone at Vertmance is committed to your satisfaction and driven to exceed our clients' expectations

### OUR TECHNICAL TEAM



**BLDR. LANRE JEGEDE**  
Project Lead, Buildings



**ENGR. BEN NWOKOCHA**  
Project Engineer, Roads



**ENGR. ODUN FAKOREDE**  
Project Lead, Real Estate



**RAPHAEL I. JACOB**  
Project Officer

# **APPENDIX I**

## **Award Letters**